

H. 3 - AGI EMEA TRENCH DISCHARGE SYSTEM

AGI EMEA trench discharge system is commonly used in trench system applications on flat bottom silos. It is designed to fit in the silo's foundation, and to be connected to AGI EMEA's screw or chain conveyor.

TECHNICAL SPECIFICATIONS

- A central discharge hopper with a manual slide gate
- Intermediate discharge hoppers with manual slide gates (quantity depends on the silo and sweep auger model)
- Hand operated command kit to open and close the discharge hoppers with rack and pinion system, covered with steel pipes for protection against dust and corrosion.
- A capacitance level sensor can be added on the central discharge hopper upon client's request.

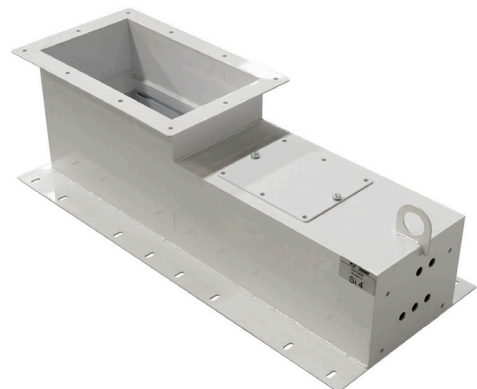
The heavy duty trench discharge system is also available for this application with hot dip galvanization execution. The central discharge hopper can be upgraded with an electrical motor for motorized operation. All the outlets are equipped with position sensors.

Suitable for all flat bottom silos models.



— Photo of trench discharge system - central discharge

— Photo of trench discharge system - intermediate discharge



— Photo of central discharge hopper

— Photo of intermediate discharge hopper

AGI EMEA S.R.L.

Head office: Via Bertella 2 - 40064 Ozzano dell'Emilia (BO) – Italy

P +39 051 798 107 | F +39 051 796 300 | E agiemea@agrowth.com | framespa.com | ptmtechnology.com | agrowth.com