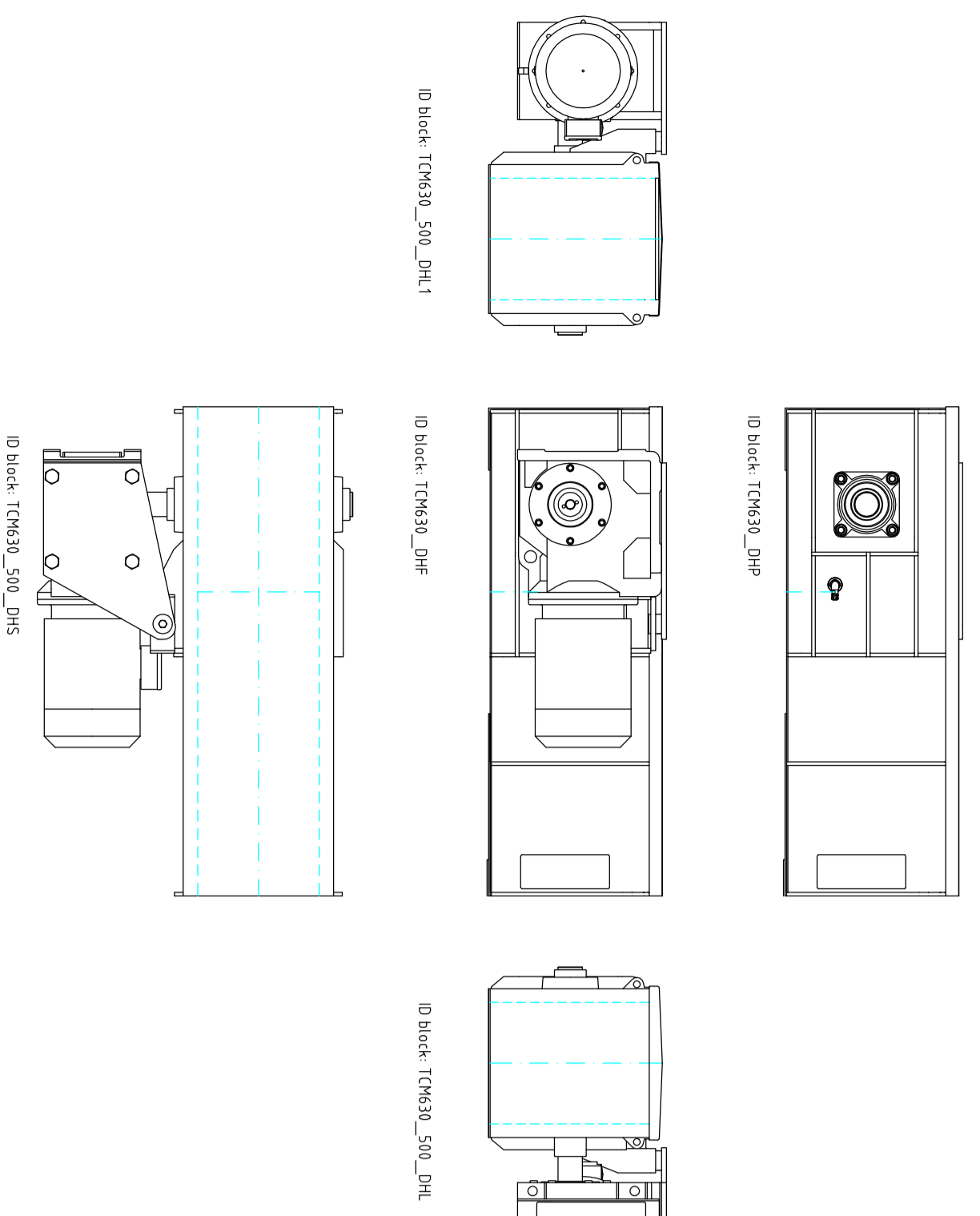


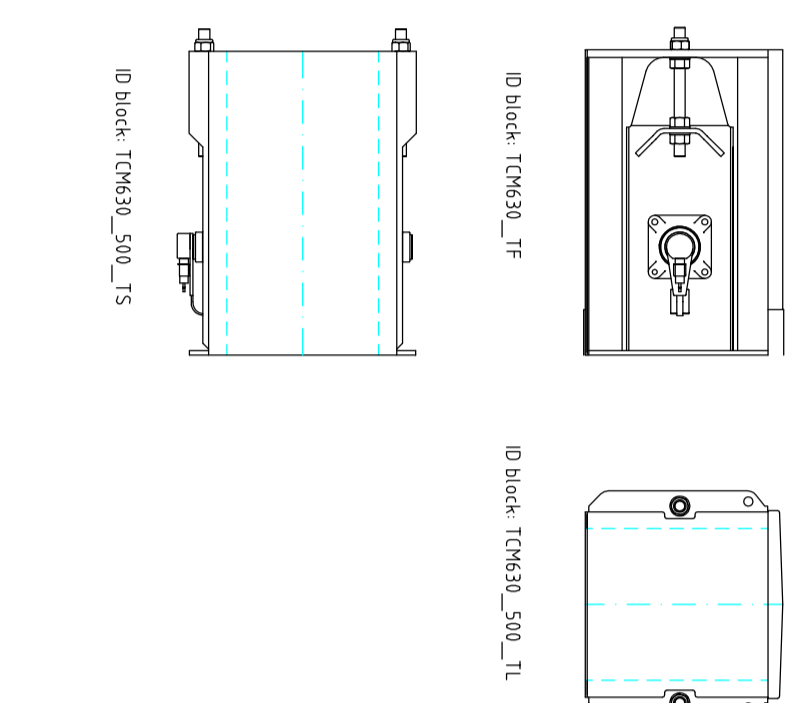
# TCM 630/500

TESTATA COMANDO  
DRIVING HEAD

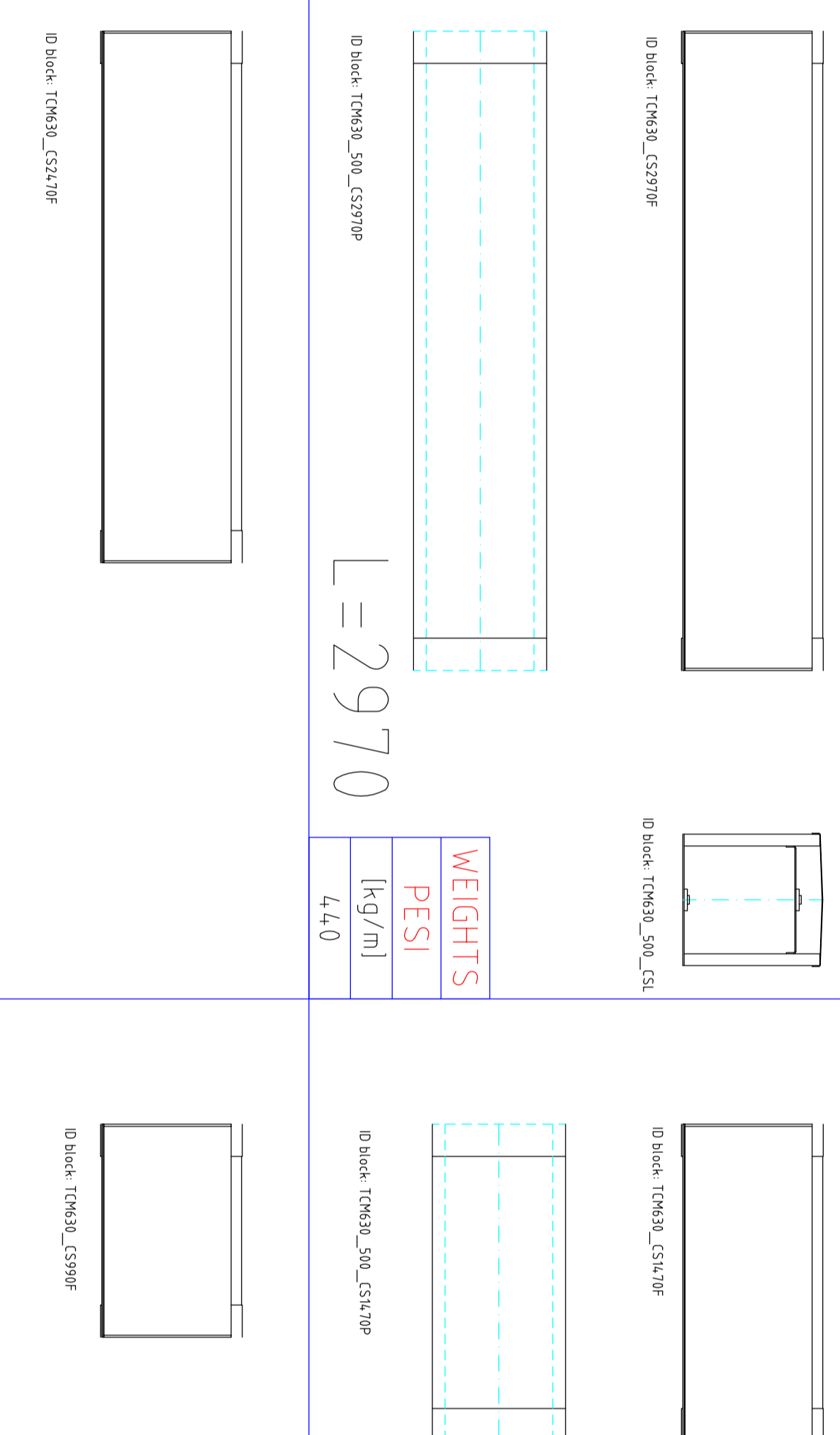


WEIGHTS	
PESI	[kg]
	22 2268
	37 2438
	55 2715
	110 3621

PIEDE  
TAIL

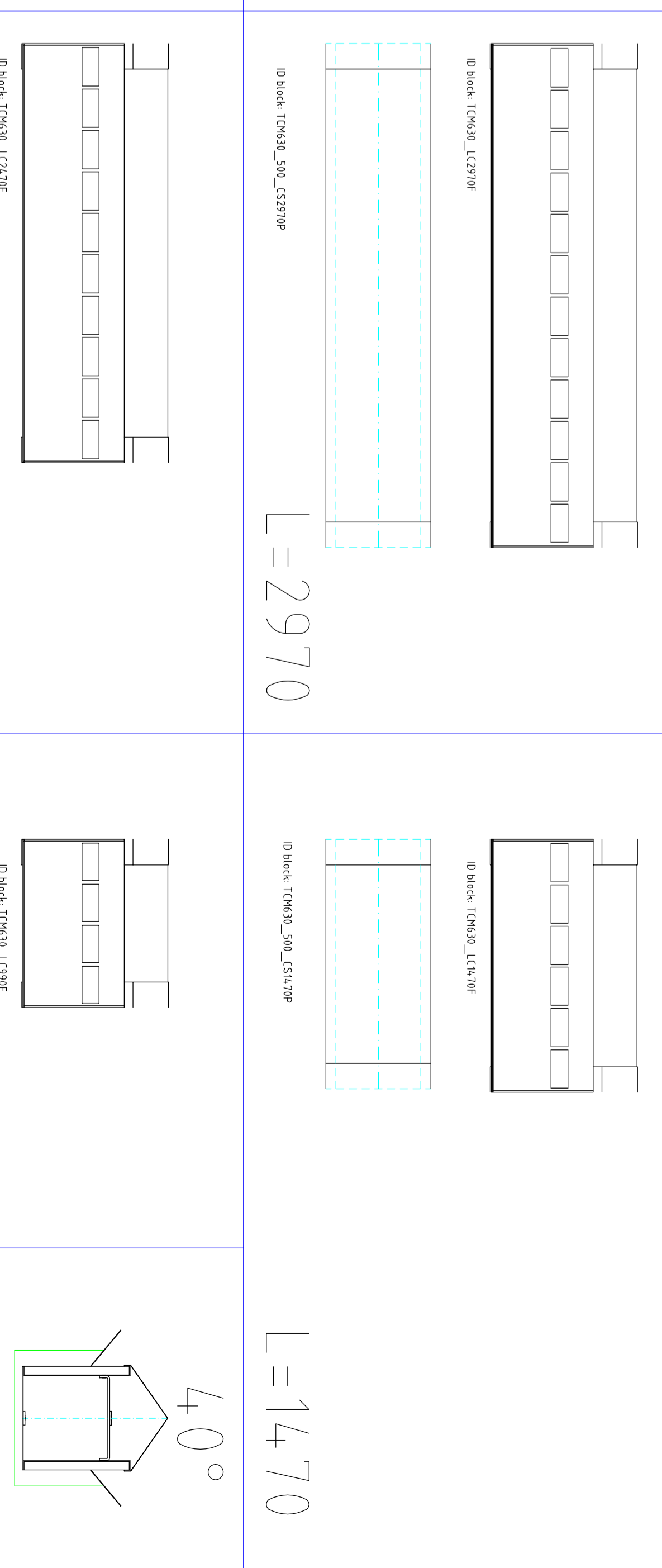


CASSE STANDARD  
STANDARD CASINGS

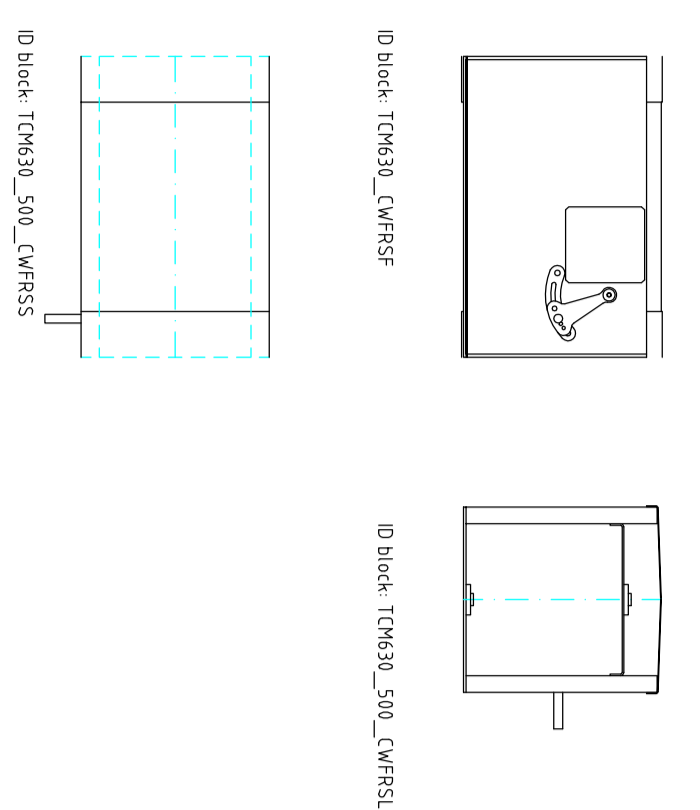


WEIGHTS	
PESI	[kg/m]
	41,0

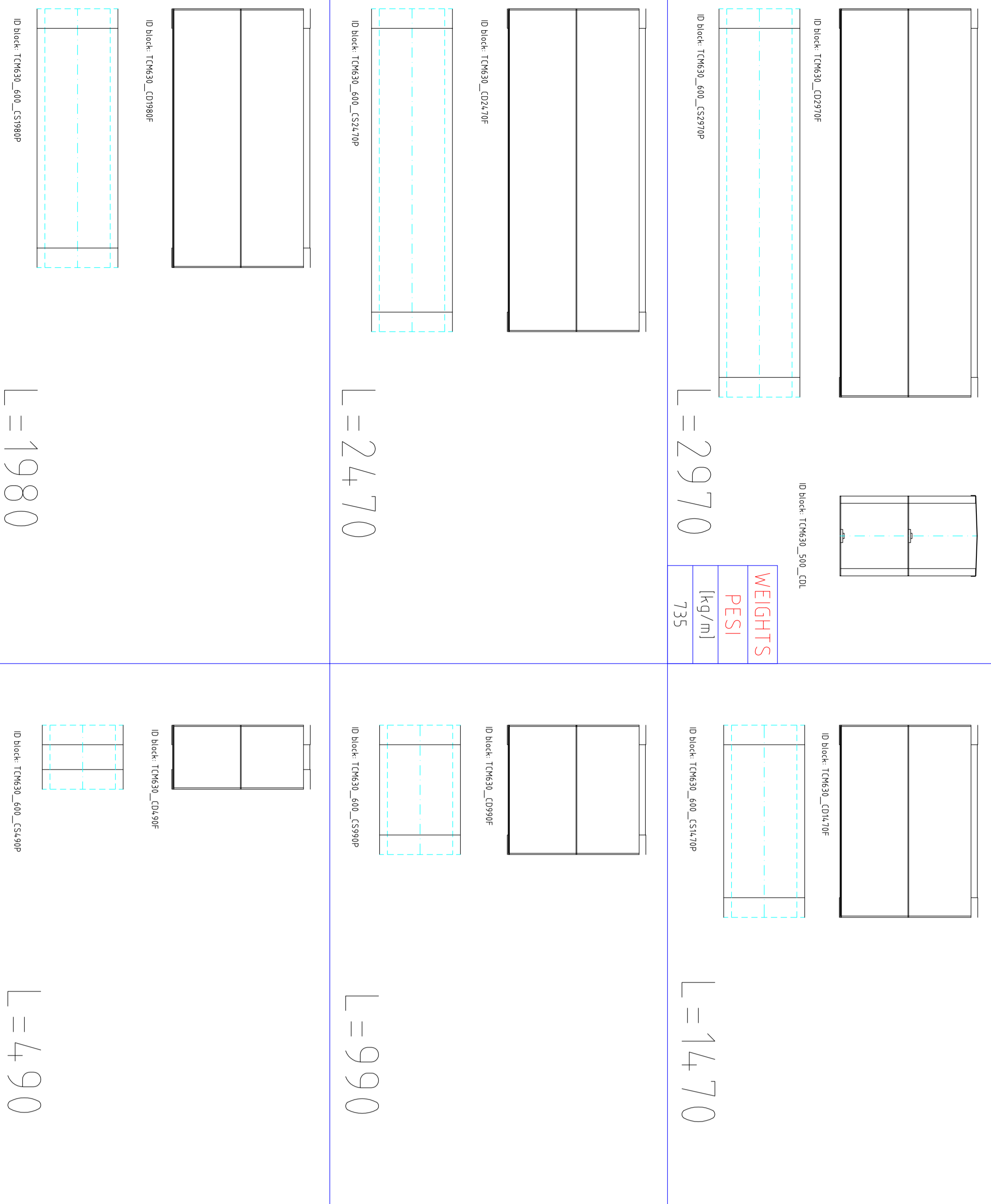
CASSE ALIMENTAZIONE LATERALE  
SIDE INLET CASING



CASSA REGOLAZIONE FLUSSO  
CASING WITH FLOW REGULATION SYSTEM

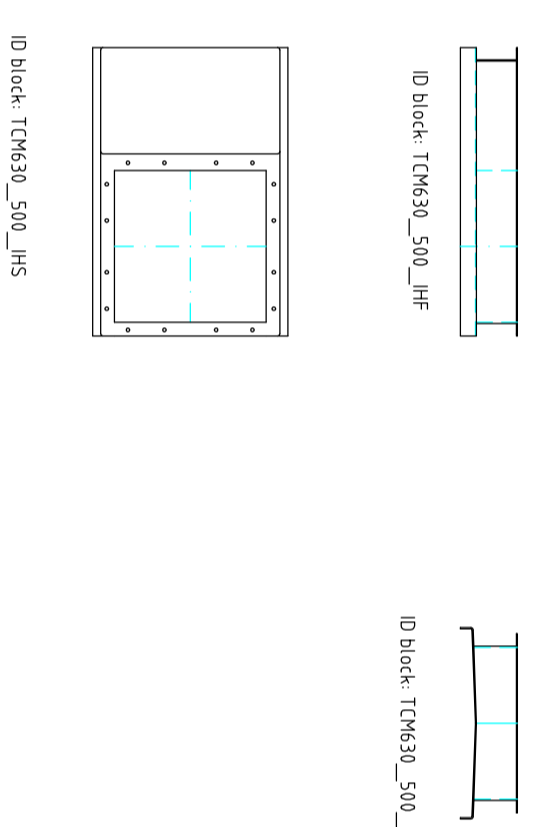


CASSE DOPPIE  
DOUBLE CASINGS

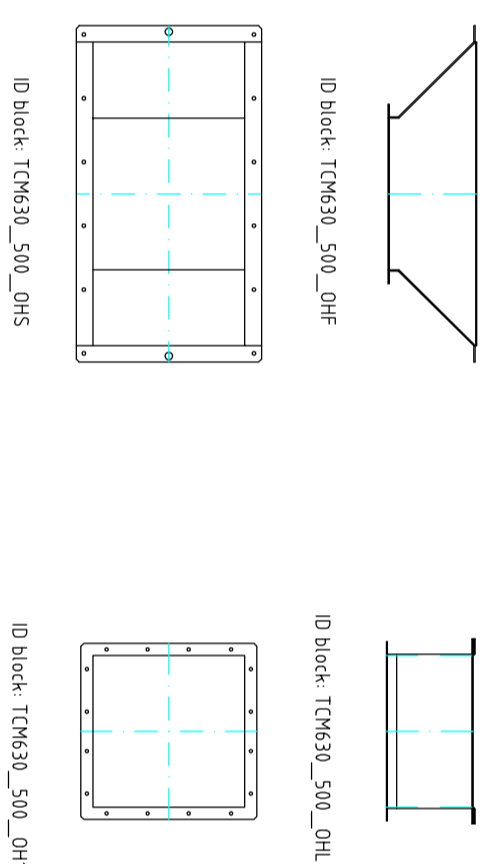


WEIGHTS	
PESI	[kg/m]
	735

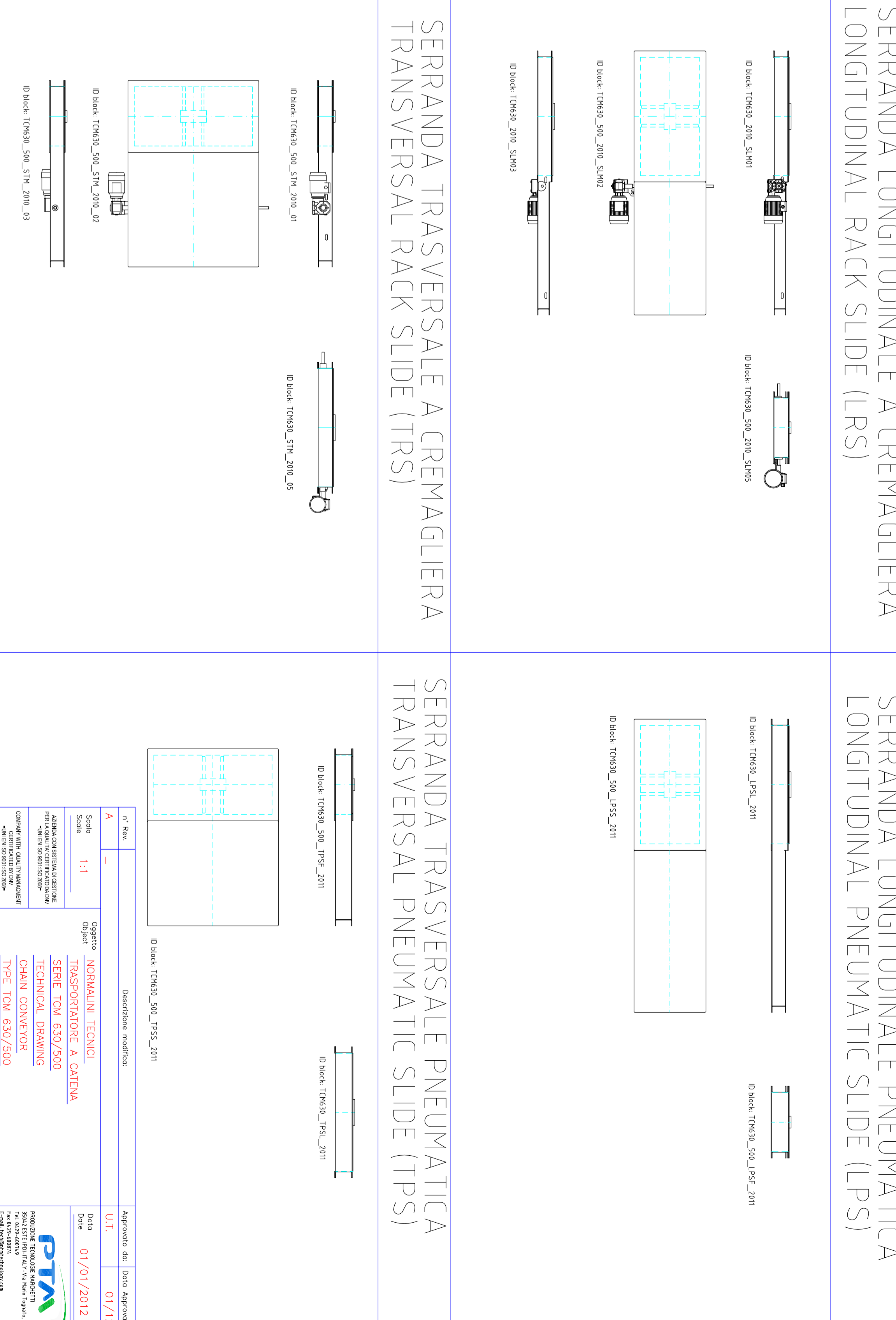
TRAMOGGIA ALIMENTAZIONE  
SQUARE INLET HOPPER



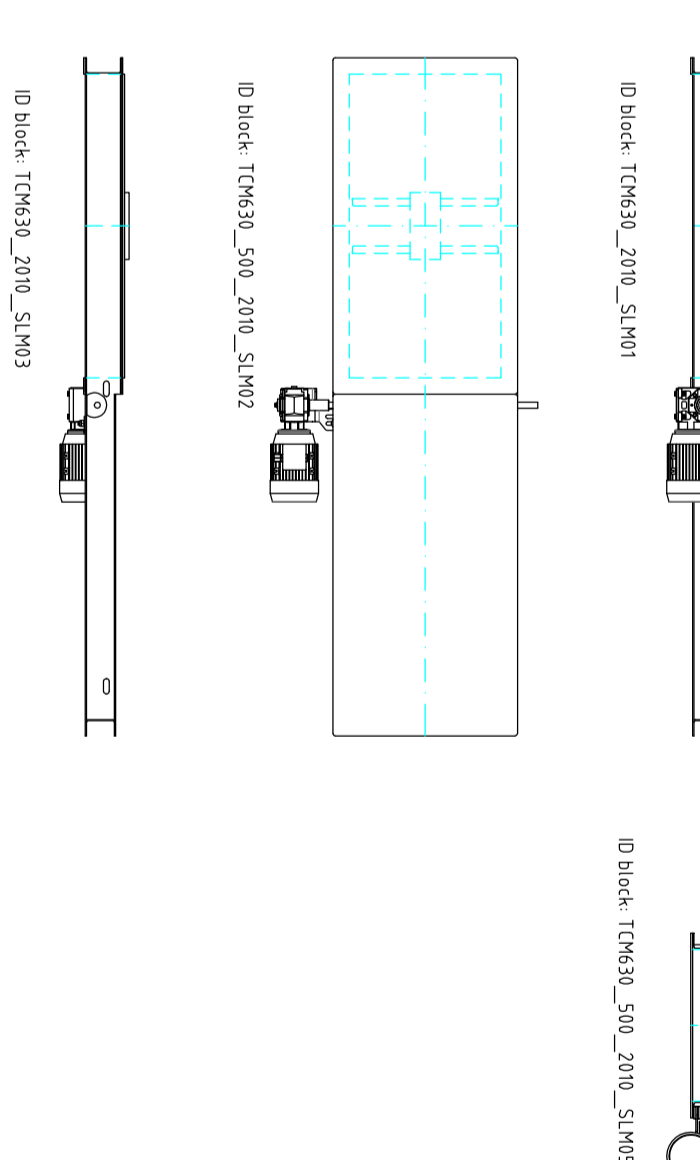
TRAMOGGIA SCARICO STANDARD SIMMETRICA  
SIMMETRICAL OUTLET HOPPER (SH)



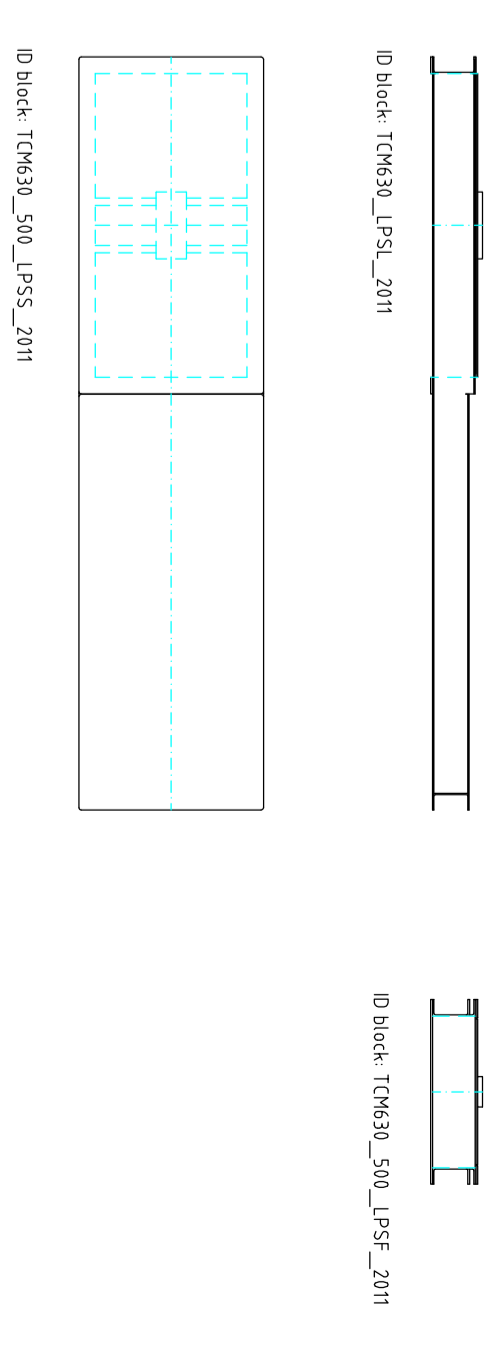
ACCESSORI  
ANCILLARIES



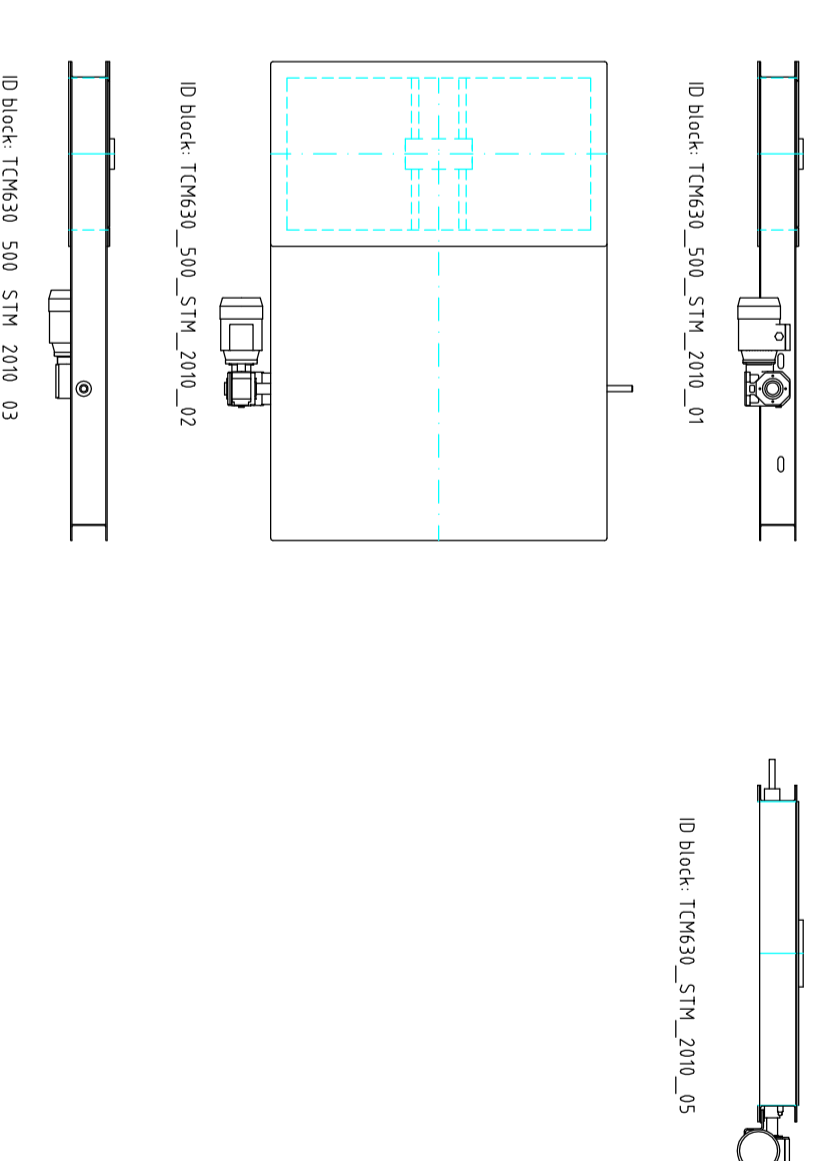
SERRANDA LONGITUDINALE A CREMAGLIERA  
LONGITUDINAL RACK SLIDE (LRS)



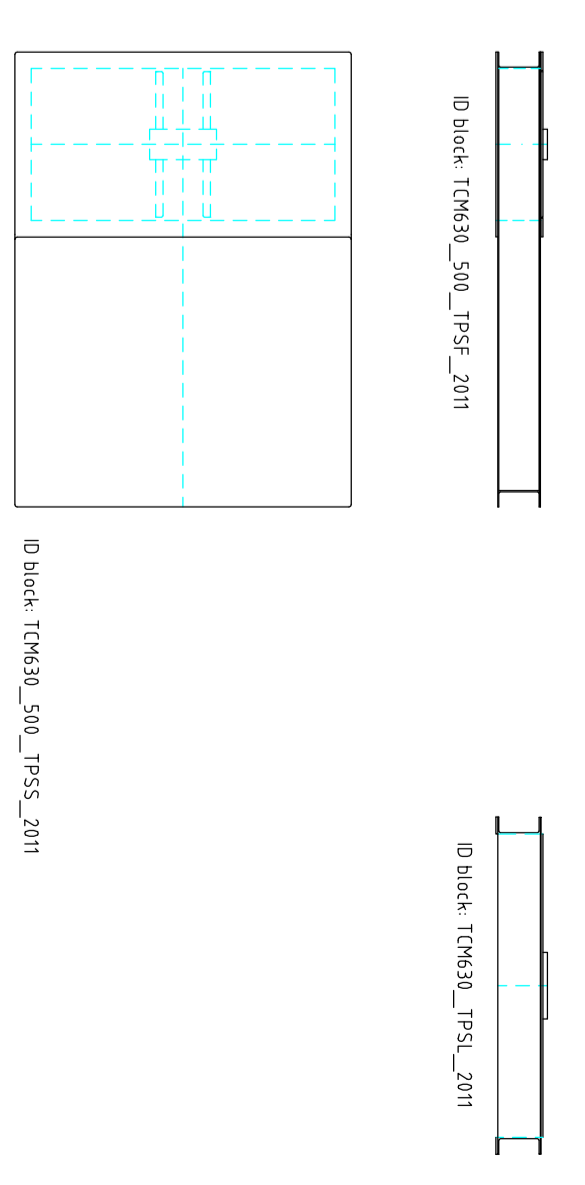
SERRANDA LONGITUDINALE PNEUMATICA  
LONGITUDINAL PNEUMATIC SLIDE (LPS)



SERRANDA TRASVERSALE A CREMAGLIERA  
TRANSVERSAL RACK SLIDE (TRS)



SERRANDA TRASVERSALE PNEUMATICA  
TRANSVERSAL PNEUMATIC SLIDE (TPS)



Codi		Descrizione modello		Aggiornato da	
A	B				
11		SERRANDA TRASVERSALE PNEUMATICA		01/01/2012	01/12