

mOI215 Controller (WS1)

24 VDC ETHERNET

The mOI215 Operator Interface (WS1) utilizes web server technology to display up to 256 sensors on your desktop PC. No additional software is required. The sensors are displayed using a tabbed page format. Setup includes sensor names and tab names for simplified organization of the data. Up to four alarms for each sensor can be entered. The unit has both external contact and e-mail alerts. The Interface can service up to 8 Bus Converters, single-wire to Modbus RTU, over an RS485 network. Each Bus Converter can process 32 sensors. Bus Converters are available for both Industrial/Commercial and Intrinsically Safe hazardous area environments. The wiring system is fully specified and includes field interconnect components. In addition to the web server, the Interface has a Modbus TCP/IP Slave interface for connection to remote PLC and computer systems. The unit is provided in a compact wall mount enclosure.



mOI215 Aegis Webserver © CMC Industrial Electronics Ltd., 2004-2007

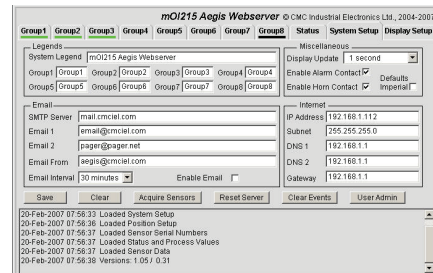
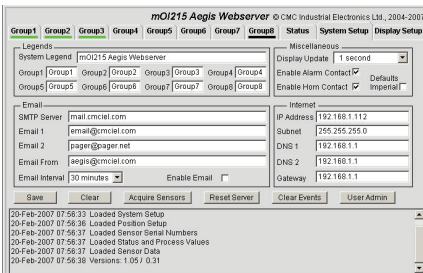
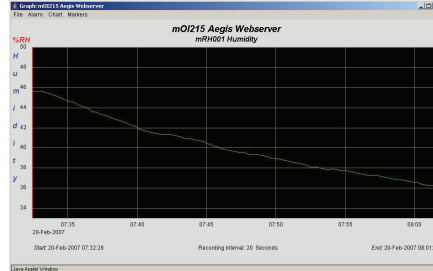
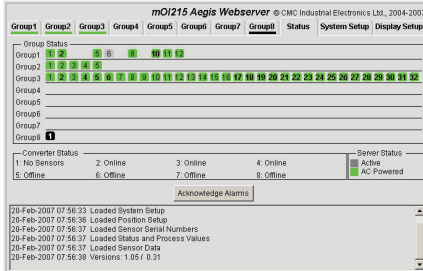
Group1	Group2	Group3	Group4	Group5	Group6	Group7	Group8	Status	System Setup	Display Setup
mTC001, Ambient		T14, 63	°F							
mTS011-3B, Ambient		16.9	°C							
mRS001 Roth Sensor		0	RPM							
Temporarily Disabled										
mCM001 AC Current		0.0	A							
mRH001 Humidity		38.3	%RH							
mAM001 Process Sig		0.0	A							
mAM001 Analog Module		4.77	V							

20-Feb-2007 07:56:33 Loaded System Setup
20-Feb-2007 07:56:36 Loaded Position Setup
20-Feb-2007 07:56:37 Loaded Sensor Serial Numbers
20-Feb-2007 07:56:37 Loaded Status and Process Values
20-Feb-2007 07:56:37 Loaded Sensor Data
20-Feb-2007 07:56:38 Versions: 1.05 / 0.31

- MONITORS UP TO 256 DIGITAL SENSORS WITH 1 SECOND UPDATE TIME
- USES WEB BROWSER INTERFACE FOR SETUP AND DISPLAY, NO SOFTWARE REQUIRED
- TRANSPARENT MAPPING OF SENSORS TO DISPLAY POSITIONS, AUTOMATICALLY REMAPS MOVED SENSORS
- VALUES CAN BE DISPLAYED IN SI, ENGLISH, OR USER-CONFIGURABLE UNITS
- UP TO 4 SETPOINTS FOR EACH SENSOR, ABSOLUTE OR REFERENCED TO A SECOND SENSOR
- COLORED TABS IMMEDIATELY INDICATE SENSOR STATUS IN EACH GROUP
- E-MAIL ALARM ALERTS COMPLETE WITH USER ASSIGNED SENSOR DESCRIPTIONS
- DRY CONTACT OUTPUTS FOR HORN AND EXTERNAL ALARM WITH ACKNOWLEDGE INPUTS
- FULL DISPLAY OF PROCESS VALUES, ALARMS AND WARNINGS, BUS CONVERTER AND SENSOR STATUS
- 32 CHANNELS OF DATA LOGGING ASSIGNABLE TO ANY SENSOR WITH BUILT IN GRAPHING
- EASY CONFIGURATION OF SENSOR NETWORK, JUST PICK THE SERIAL NUMBER FROM AN AUTOMATICALLY ACQUIRED TABLE
- AUTOMATIC DETECTION OF BUS CONVERTERS ON MOBILE PLATFORMS SUCH AS TRIPPERS OR BARGES
- UTILITY AVAILABLE FOR BACKUP AND RESTORATION OF SETUPS
- MODBUS TCP/IP INTERFACE SIMPLIFIES INTEGRATION WITH PLANT AUTOMATION SYSTEMS
- LOW POWER OPERATION WITH BATTERY BACKUP

mOI215 Controller (WS1)

24VDC ETHERNET



Specifications	Description	Characteristic
Power Supply	Voltage	16 – 20VAC or 20 - 28VDC
	Current	400mA @ 24VDC (includes sensor network)
Supervisory Inputs	Voltage	24VDC
	Current	20mA
Supervisory Contacts	Voltage	32VDC, 120VAC
	Current	1.0A @ 24VDC, 0.5A @ 120VAC Resistive
Bus Converter Communication	Standard	RS485 differential
	Distance	1640ft (500m)
	Input Load	12kΩ standard
Modbus Slave PLC Port	Termination	120 Ω balanced line
	Standard	RJ-45 Ethernet Modbus TCP/IP
Environment	Temperature	-40°F to +158°F (-40°C to +70°C)
	Relative Humidity	0 to 95% non condensing
Dimensions	Height	10.00" (254mm)
	Width	8.4" (214mm)
	Depth	3.25" (83mm)

MOI215 DS A00

888.421.4425 | sales@cmciel.com
 AGGROWTH.COM | CMCIEL.COM

