

UTX

U-TROUGH AUGER



Capacities like never before

Feel the power of up to 9,000 BPH

AGI GrainMaxx is dedicated to the highest level of manufacturing quality, bringing with them over three decades of expertise in the agriculture industry. AGI GrainMaxx brings innovations to your auger, like Wear Edge Technology™ to extend the life of the flighting and powder coat paint to protect against and repel rust. Our UTX Truck Auger features a completely enclosed driveline with a solid tube guard to provide a cleaner, sleeker look while protecting your auger from the elements. Steel Hydraulic Lines have also been added to the new Self-Propelled Mover Kit to create a cleaner look and ORB Fittings on the cylinders reduce the chance of leakage.

We know farmers are looking for labor-saving, cost-effective upgrades to help make their work easier. Exactly why we've added features like a removeable tow bar to make connecting and detaching from the hitch easier than ever and a hydraulic winch to help raise and lower the auger with ease and precision. Next, to make adjusting the top drive easier, AGI GrainMaxx added a chain tensioner which also helps maintain consistent chain drive tension. The top drive comes sealed with a durable cover and inside you'll find grease-lubricated forged steel sprockets and heavy-duty chain, designed to match your auger's capacity.

For long, quiet operation, the driveshaft and bearings are constructed of durable oil impregnated hardwood and can be easily replaced without disassembling the driveshaft.

To further improve performance, AGI GrainMaxx uses square one-bolt flight connections that provide positive torque transfer. All UTX models come standard with triple banded belts to better maintain speed by providing improved tension with less slippage.

AGI GrainMaxx's UTX Truck Auger is a high performance, high capacity auger that's ready to help make your job easier and faster.



Reversing gearbox

Comes with shifting linkage and lockout, allowing the operator to safely reverse the auger at all angles.



Self-Propelled Heavy-Duty Mover

Complete with all-wheel drive, standard hydraulic steering, and rugged all-terrain tires capable of handling tough terrain, this compact mover kit gives better access to large diameter hopper bins and a sharper turning radius.



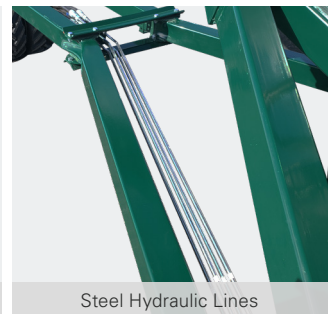
Solid Tube Guard



Triple Banded Belts



Adjustable Chain Tensioner



Steel Hydraulic Lines



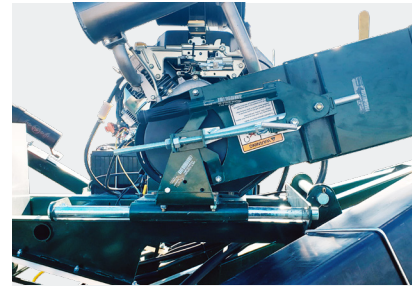
Collapsing spring loaded hopper extension

Quickly and easily fit under some of your lowest and hardest to reach bins.



Work lights

LED working lights provide enhanced lighting conditions when the sun has gone down.



Triple-groove electric clutch

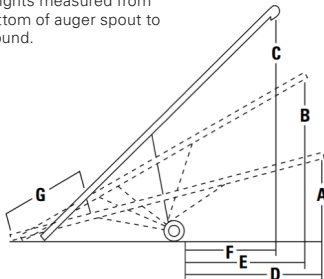
Start and stop the auger without shutting down the gas engine drives.



Gas motor

Choose either a Vanguard or Kohler gas motor, with a large 44 L gas tank that helps you work as long as you need to.

Heights measured from bottom of auger spout to ground.



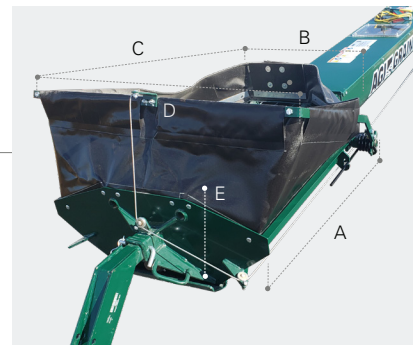
A	9' 2"
B	13' 9"
C	18' 4"
D	14' 10"
E	15'
F	14' 7"
G	11'

SPECIFICATIONS

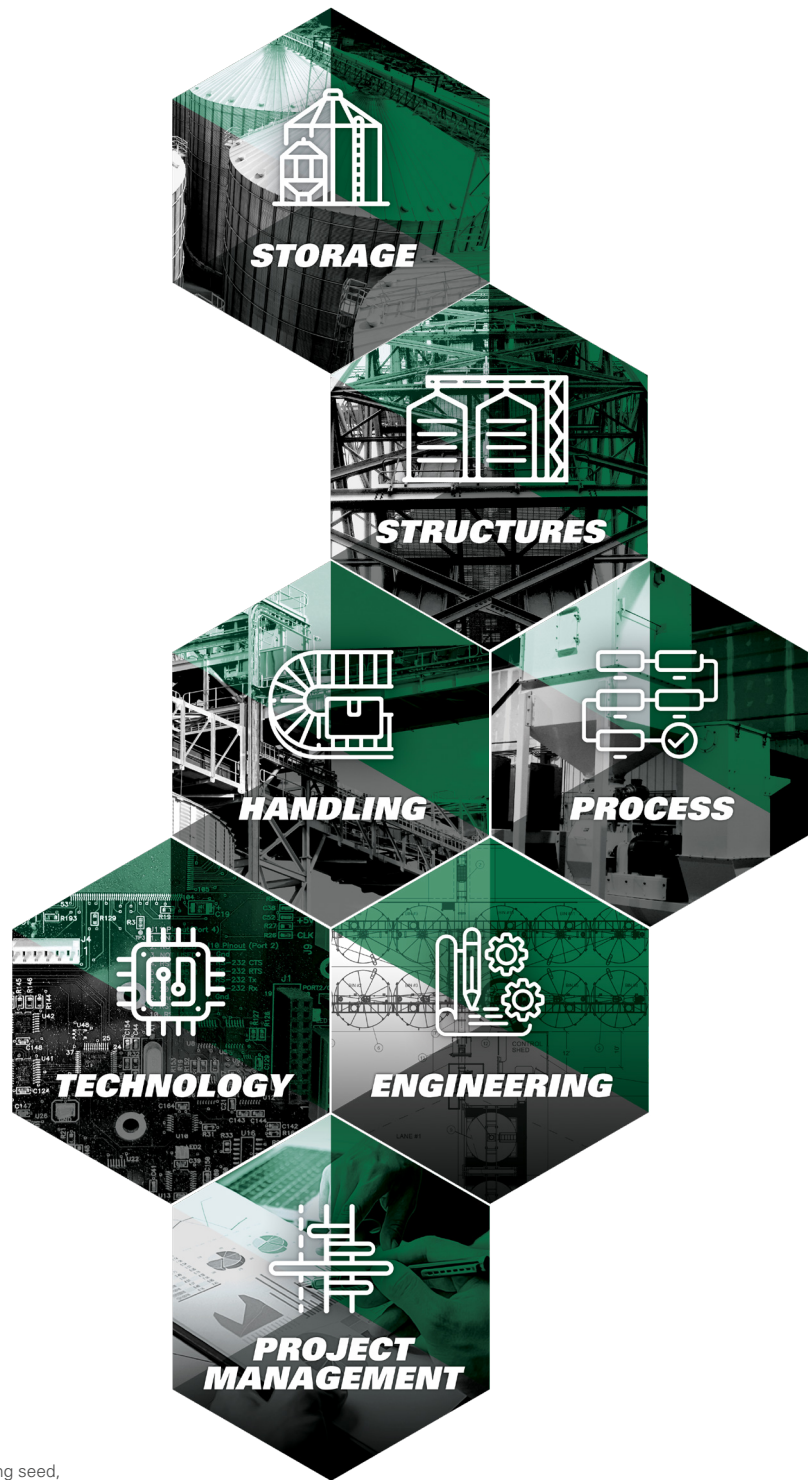
TROUGH GAUGE	12 GA
TROUGH CONNECTORS	¼" Flange
MAIN FLIGHTING	10" OD x 7 GA stretched + welded
INTAKE FLIGHTING	10" OD x 7 GA welded with Wear Edge Technology™
FLIGHTING SHAFT	2" OD x 0.120" Wall tubing
DRIVESHAFT	1 ½" OD x 10 GA tubing
DRIVESHAFT BEARINGS	1 ½" Oil impregnated hardwood bearings
TRACK	High yield 11 GA roll formed
TRACK SHOE	2 ⅝" Steel roller
UNDERCARRIAGE	3" Square tubing
AXLES	2 ½" Square tubing
HUB & WHEELS	4 Bolt agricultural type hubs, 15" wheel
LIFT CABLE	¼" Aircraft type galvanized steel cable
TIRES	15" Agricultural tires
BELT SIZE	3B270
TOP DRIVE	#80 Roller chain & hardened steel sprockets
TOP DRIVE BEARINGS	1 ¼" Pillow block
WINCH	Reduction gear with automotive brake
GEARBOX	Formed steel gears with tapered roller bearings
WHEEL TREAD	96"
GAS HORSEPOWER	37 - 38
CAPACITY	7,000 - 9,000 BPH

DISCLAIMER: The UTX series auger was proudly designed to handle dry, free-flowing grains up to a maximum density of 65 lb/bu (52 lb/cf). Any usage of this auger outside of this is not authorized by AGI

	DISCHARGE CLEARANCE DIMENSIONS	TRANSPORT DIMENSIONS
MIN	9' 6"	LENGTH 45' 6"
MAX	18' 1"	WIDTH 8'
HEIGHT	10' 6"	HEIGHT 10' 6"



WEIGHT		HOPPER DIMENSIONS	
HITCH WEIGHT (W/ ENGINE)	472 LBS	A - HOPPER LENGTH	37 ½"
TOTAL WEIGHT (W/ ENGINE)	3,058 LBS	B - HOPPER WIDTH	29 ¾"
HEIGHT	10' 6"	C - CANVAS OPENING LENGTH	34 ⅛"
		D - CANVAS OPENING WIDTH	37 ¾"
		E - COLLAPSED HEIGHT	15 ⅝"



GRAINMAXX is an AGI Brand.

AGI is a leading provider of equipment solutions for agriculture bulk commodities including seed, fertilizer, grain, and feed systems with a growing platform in providing equipment and solutions for food processing facilities. AGI has manufacturing facilities in Canada, the United States, the United Kingdom, Brazil, India and Italy and distributes its products globally.

AGI **GRAINMAXX**

Box 1750, Swift Current, Saskatchewan, Canada S9H 4J8
 855.432.1990 | aggrowth.com/grainmaxx

AGGROWTH.COM [aggrowthintl](#) 